



Operating instructions

LEUCHTIE® Plus

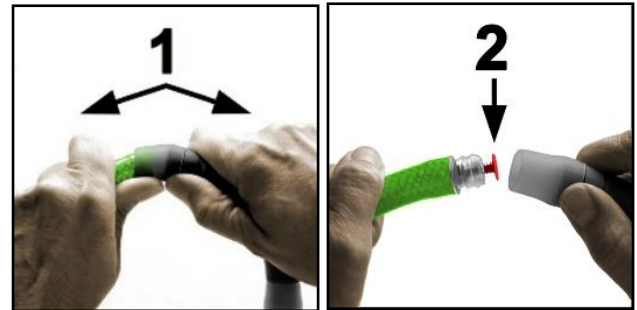
with motion sensor for alkaline batteries type AAA/micro

Initial start-up

Before using the LEUCHTIE for the first time please remove the transport protection (insulation cap). It is the red stopper located on the side without size label on the light tube.

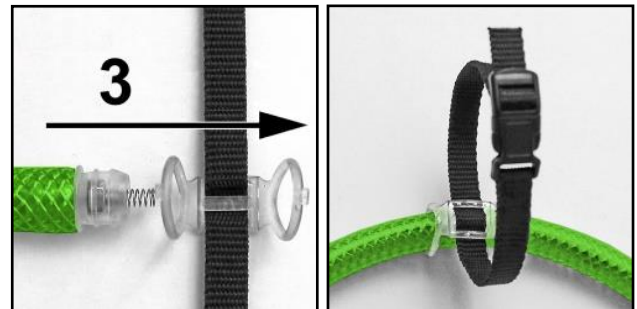
Removing the insulation cap:

1. Separate the tube from the battery pack by pulling them apart with slight angular movements, taking care not to use excessive force (1).
In doing so, hold the silicone sleeve onto the battery compartment.
2. Remove the red insulation cap (2) and discard.



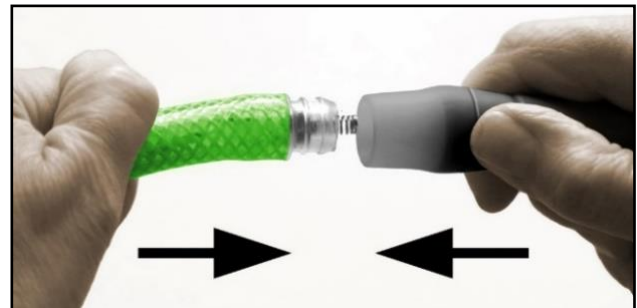
Fix the attachment loop:

3. In order to secure the LEUCHTIE to a collar or harness with the enclosed fixation loop, pull the open end of the tube through both transparent rubber rings of the loop (3).

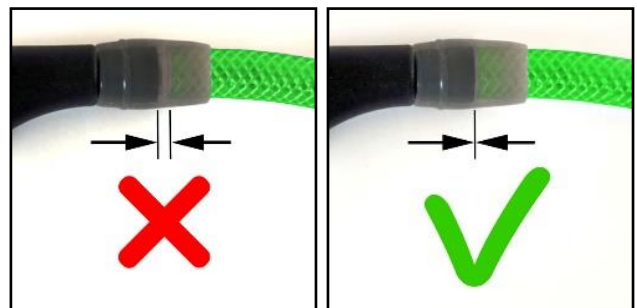


Closing:

4. Insert the end of the tube straight into the battery compartment. Be careful not to bend the contact spring.
5. Press the battery pack and the tube firmly together as far as possible, until they are closed properly.

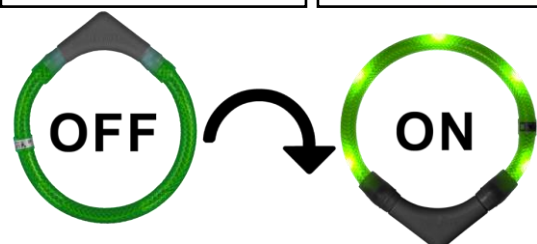


IMPORTANT: There must be no gap between the battery pack and the tube (see also figures page 3).



Turning the LEUCHTIE on and off

Simply slip the LEUCHTIE over the dog's head and it will turn on automatically by sensor as soon as the battery pack points downwards and the LEUCHTIE is in motion. When the battery pack faces upwards the LEUCHTIE will turn off slowly after approx. one minute. Therefore, suspend the LEUCHTIE e.g. on a hook for storage.



Battery change

- The operating time using 2 alkaline batteries type AAA / Micro is about 100 hours.
- Please use brand alkaline batteries and remove both empty batteries immediately to avoid damage from leaking batteries.
- Please remove both batteries in case of longer disuse (e. g. in the summer).

Replace both batteries immediately if the brightness of the LEDs decreases significantly or if the LEUCHTIE turns off shortly after switching on.

Change the batteries in a dry and clean place and make sure that both the LEUCHTIE and your hands are dry and free of grease.

1. Disconnect both ends of the light tube from the battery pack one after the other, as explained in initial start-up on page 1.
2. Remove both empty batteries.
3. Insert 2 new batteries (alkaline type AAA/Micro, no rechargeable batteries) into the battery compartment so that
 - on one side the **positive** terminal
 - on the other side the **negative** terminalis visible.



4. There is a **red** and a **blue** marking in the sockets at the ends of the light tube. Connect the light tube with the battery compartment as follows:
 - the **red** end of the tube with the **positive** terminal
 - the **blue** end of the tube with the **negative** terminal

For correct assembly, follow the procedure for closing the LEUCHTIE described on page 1.

5. Test the function by tilting the LEUCHTIE so that it turns on. If the LEUCHTIE does not work, check the correct position of the batteries and the correct attachment of the battery compartment. Please also note the information on pages 3 and 4.

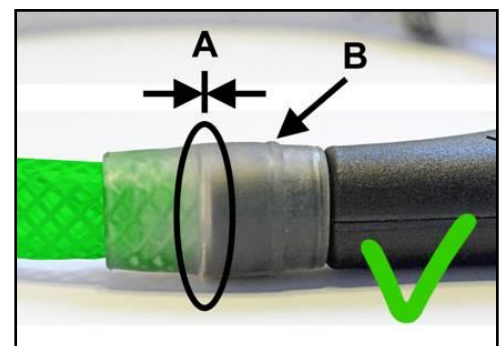
Correct connection of battery compartment and light tube

Please always ensure a correct connection between battery compartment and light tube. Otherwise loose contacts may occur or the connection may even open.

Assemble the LEUCHTIE correctly:

The silicone sleeves are located on both sides centrally on the transition from battery part to light tube and do not show any defects.

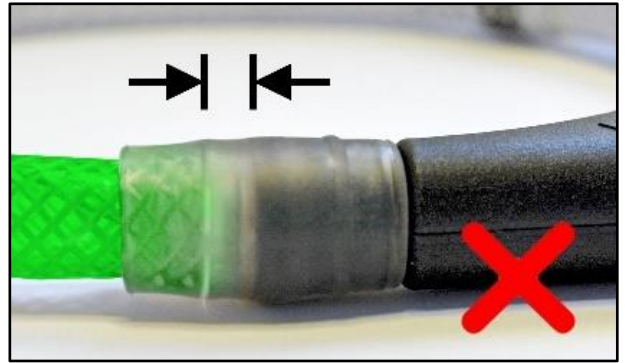
- A) The LEUCHTIE is completely closed up to the stop: there is no gap between the light tube and the battery compartment.
- B) The sleeve end with the annular bead sits on the battery pack on both sides.



Possible sources of error

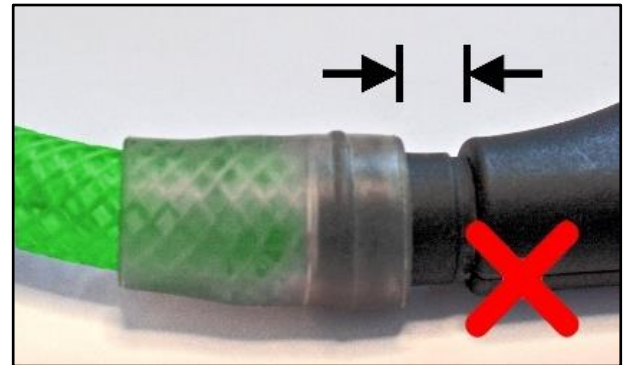
LEUCHTIE is not completely closed:

- The light tube is not completely inserted into the battery compartment:
- A gap can be seen between the light tube and the battery pack.

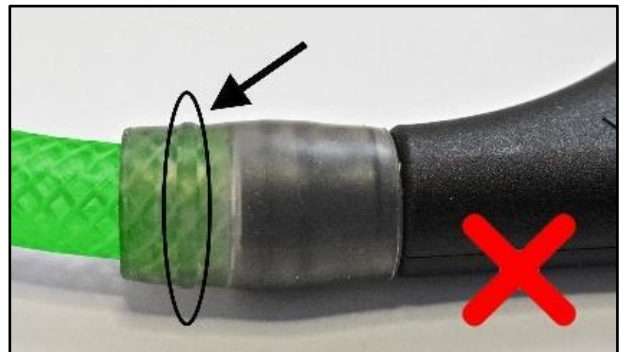


Incorrectly attached silicone sleeves:

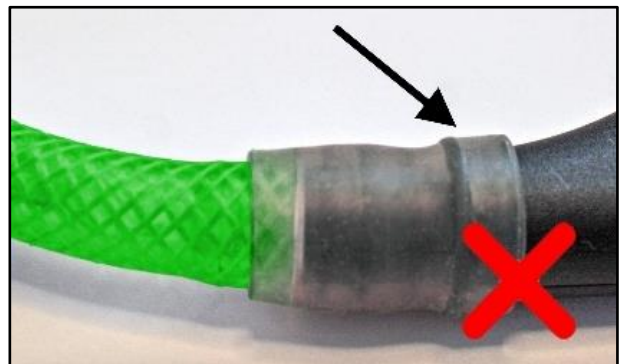
- The sleeve is not pulled all the way to the stop on the battery compartment - it is located too far on the light tube.



- The sleeve is pulled beyond the stop of the battery compartment - it is too far on the battery compartment.

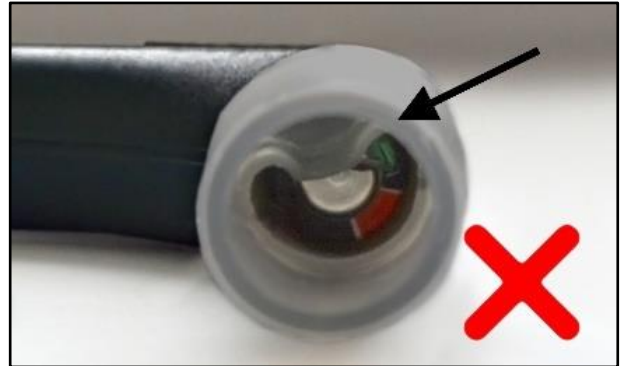
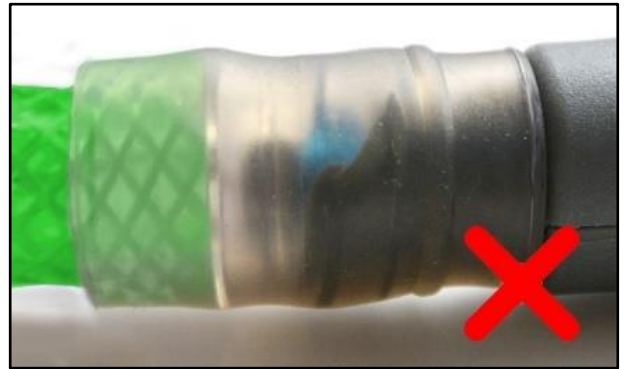


- The sleeve is attached the wrong way round. The sleeve end with the ring bead must be on the battery compartment.



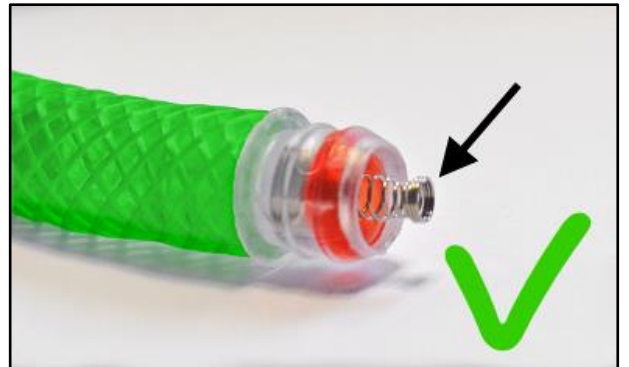
Kinked battery compartment:

- The edge of the battery compartment has been accidentally kinked when the light tube was inserted into the battery compartment.
- As a result, the light tube cannot be inserted completely into the battery compartment up to the stop.
- In comparison, a correctly seated battery compartment with the sleeve attached.



Bent or loose contact springs:

- The springs protruding from the ends of the light tube on both sides must be firmly screwed into the nut and must not be bent or kinked.
- Defective contact springs can be easily replaced if necessary: www.leuchtie.com/faq-spring



Battery part wrongly plugged in or batteries wrongly inserted

Check the correct position of

- both batteries
- the battery compartment

using the battery change instructions on page 2.



Warning: Important Safety Information

1. Introduction and Purpose

Thank you for choosing our LED light-up collar for your beloved dog. Before use, please carefully read and understand the following safety information and warnings to ensure the safe and responsible use of this product.

2. Choking Hazard

Please use the LEUCHTIE only for its intended purpose as a light-up collar for improved visibility in low-light conditions. Avoid using it for any other purposes. The LED collar is not a toy and should not be left on an unattended dog. Avoid using this collar on puppies or small breeds prone to chewing, as ingesting any part of the collar may pose a choking hazard. Know your dog and choose the appropriate type of product to prevent choking or other harm.

LEUCHTIE is not a toy. Your LEUCHTIE can be damaged by excessive stress, such as throwing or biting hard, and may open under certain circumstances. Small parts, including batteries and contact springs, can fall out and get lost. Swallowing small parts can be life-threatening. Therefore, keep both your LEUCHTIE and its accessories, such as the attachment loop, out of the reach of your dog and small children. If any parts are swallowed, seek immediate medical assistance.

3. Sizing and Fit

Select the appropriate collar size for your dog to ensure a comfortable fit. Avoid using collars that are too tight, as they may cause discomfort or injury.

4. Visibility and Low Light Conditions

The LED collar is designed to enhance visibility in low-light conditions. However, it should not replace traditional collars used for leash attachment during walks. Always use a separate collar and leash for walking your dog.

5. Battery Safety

For your battery-powered LED collar, please use only the recommended batteries and follow the instructions for replacement. Do not use damaged or non-recommended batteries. Keep spare batteries out of reach of pets and children. Ingestion of this product can result in serious injury. Discontinue use if damaged. Do not use the LEUCHTIE if any malfunction or damage is apparent. We accept no liability for any further damage or loss resulting from the use of a malfunctioning or damaged LEUCHTIE.

6. Water Resistance

Make sure that no humidity gets inside the LEUCHTIE, especially when cleaning it or changing the batteries. When fully closed, the LEUCHTIE is well-protected against water and humidity. Should you notice humidity inside the LEUCHTIE, pull the tube and the battery pack apart with slight angular movements (see figure on page 1) and let both parts dry completely. Avoid temperatures above 50°C.

7. Supervision and Monitoring Usage

Monitor your dog closely during initial use with the LED collar. If you notice any signs of discomfort, irritation, or abnormal behavior, discontinue use immediately and consult a veterinarian if necessary. Observe your pet's behavior with the product for suitability. Some products may be inappropriate for your pet. Always supervise your dog when they are wearing the LED collar. Do not leave the collar on your dog unattended for an extended period. Supervised use only.

8. Allergic Reactions

Although LEUCHTIE has been tested and certified to meet European CE and ROHS requirements regarding material safety, some dogs may be sensitive or allergic to certain materials. Check your dog for any signs of allergic reactions, such as redness or irritation, and stop using the collar if such reactions occur.

9. Proper Maintenance

Keep the LED collar clean and regularly inspect it for any signs of wear or damage. Replace worn or damaged collars promptly to ensure your dog's safety and comfort. Do not dry or heat the LEUCHTIE in the microwave under any circumstances, as microwave radiation can destroy the electronics immediately. Also, do not charge, reactivate, disassemble, heat, or short-circuit the supplied batteries. Follow the instructions provided for battery replacement and disposal.

10. Warnings about Certain Dog Breeds or Conditions

This LED collar may not be suitable for all dog breeds or specific medical conditions. Consult with a veterinarian if you have concerns about using the collar on your dog. Not for use during containment or crating.

11. Ingestion or Swallowing

If you think the portion of the product containing the batteries have been swallowed or placed in any part of the body, seek immediate medical attention.

12. Avoid Excessive Force and Stress

Do not attach a lead/ leash to the LEUCHTIE or hold your dog by the LEUCHTIE. Applying too much force on the collar could cause the batteries, springs, or other parts to fall out and get lost, potentially posing a choking hazard. Always use a separate collar and leash for walking your dog.

13. Contact Information

Please remember that your dog's safety is our priority. By adhering to these safety guidelines, you can ensure a positive experience with our LED light-up collar.

For any inquiries, customer support, or assistance related to the LED collar, please contact

Disko Dog:

Email: info@diskodog.com

Phone: +1-213-787-7788

Website: www.diskodog.com

Cleaning

Clean the LEUCHTIE in warm water and soap or mild detergent if required. Do not use aggressive or solvent-based cleaners! When cleaning the LEUCHTIE, please ensure that the silicone sleeves are closed properly to prevent humidity from entering.

Spare parts & repair service

If required, you can obtain batteries, inexpensive spare parts and useful accessories from your dealer or directly from us:

If, contrary to expectations, a case of damage occurs which you or your dealer cannot repair, we offer you the possibility of an uncomplicated repair at any time:

Disposal / Recycling / Labeling



This product meets the requirements of the Directive 2011/65/EU of the European Parliament and of the Council of 8 June 2011 on the restriction of the use of hazardous substances in electrical and electronic equipment.



Please protect the environment and recycle this product. The product is labeled with the symbol of the crossed out waste bin, which means that it should be dropped off free of charge at a local collection point for recycling at the end of its useful life. Disposal in the regular waste is not permitted.



The used batteries cannot be disposed of with the regular household waste! Please dispose of them via the appropriate commercially available containers or drop them off at public collection points.

Manufactured in Germany by:

trends and more GmbH & Co. KG

Hammerweg 123

D-92637 Weiden

Phone: +49 961 4708440

E-Mail: info@leuchtie.de

WEEE: DE 23706136